

HOW TO TAKE WILDLIFE PICTURES

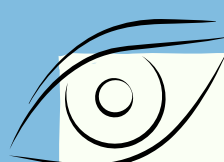
Join the ShoreNI project



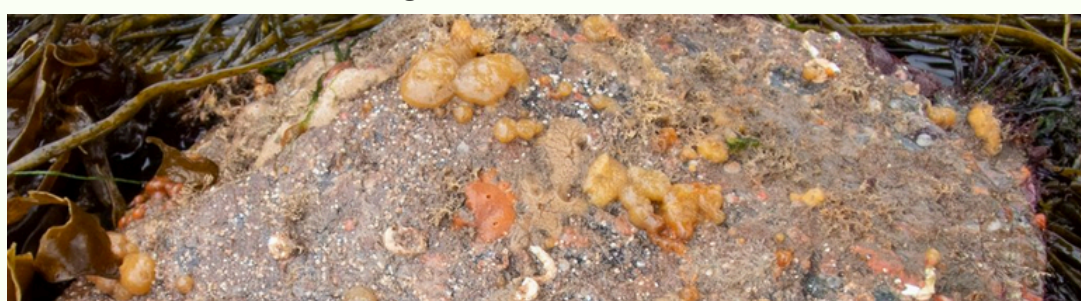
Search "ShoreNI" in the iNaturalist search bar and click "Join Project" at the top right corner.



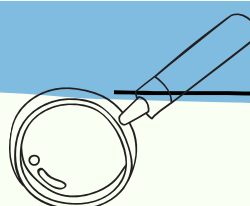
Take Your Time To See What's There



Once you're on the shore, let your eyes adjust to what's there. Some things are very small or don't move!



Get In Close

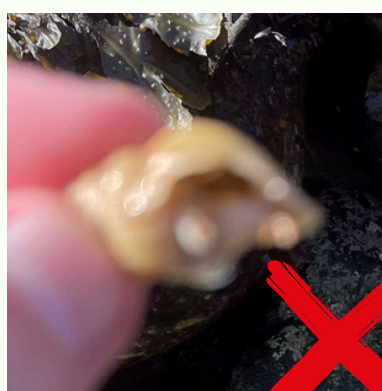


Get as close as possible to the species and make them as big as possible in the photo.



Ensure They Are In Focus

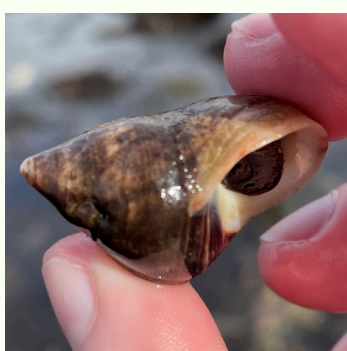
Try to get a photo that is clear and not blurry!



Shoot Multiple Angles



Take multiple photos of the same species from different angles! This gives a clearer view of the species.



Upload Your Photos



After taking your pictures, don't forget to submit them onto iNaturalist. Click the "upload" button and select all the photos you want to upload. You can drag photos of the same thing on top of each other to group them together.

Check that the location for each photo is correct. Add any identifications you want e.g. "seaweed" or "mollusc". Click "submit observations" to finish.